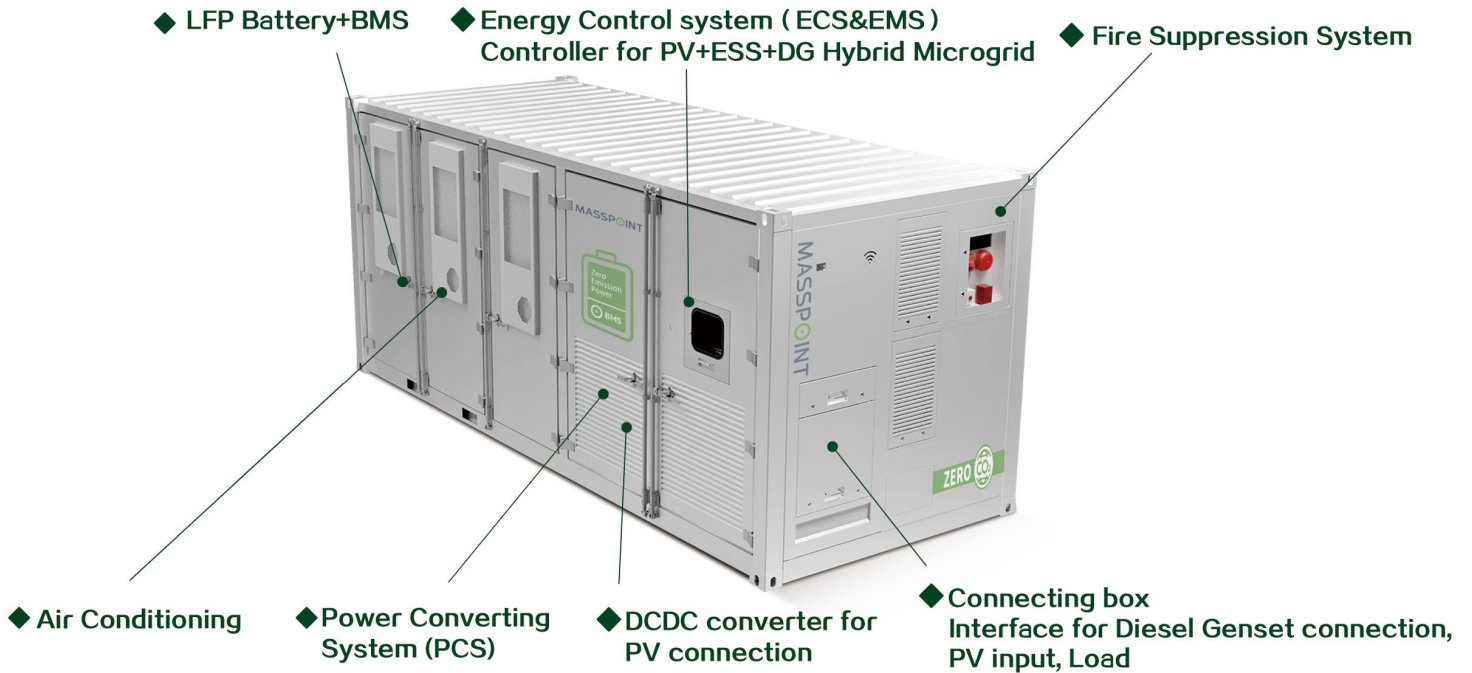


MASSPOINT

System composition



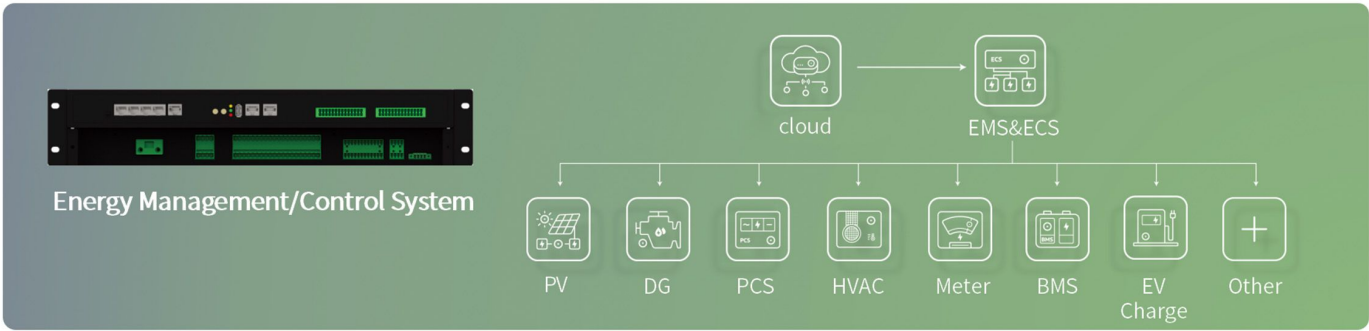
Specification

System Model	Delta-400-250/430-CE	Delta-800-500/1075-CE	Delta-1600-1000/2150-CE
Battery Parameter			
Battery Capacity	215~430kWh	430~1075kWh	1290~2150kWh
Battery Type	LFP		
PV Input Parameter			
PV Array Power	400kW	800kW	1600kW
PV Connection Method	AC Coupling	AC Coupling / DC Coupling	
Diesel Genset / Electric Supply Input Parameter			
Wiring Method	3+N+PE/3+PE,380/400/415V		
Rated Frequency	50/60Hz		
Max. Input Current	455A	911A	1823A
System Output Parameter			
Rated Power	250kW	500kW	1000kW
Basic Parameter			
System Dimension	2991*2438*2591mm	6058*2438*2591mm	12192*2438*2591mm
Weight	< 8t	< 21t	< 30t
Cooling Method	Forced air-cooling		
Working Temperature	-30~50°C		
Altitude	2000m		
Ingress Protection	IP54		
Certificates	IEC62619, IEC61000, IEC62477, IEC 63056, AS/NZS 4777.2, NRS-097, UN38.3, UN3536		

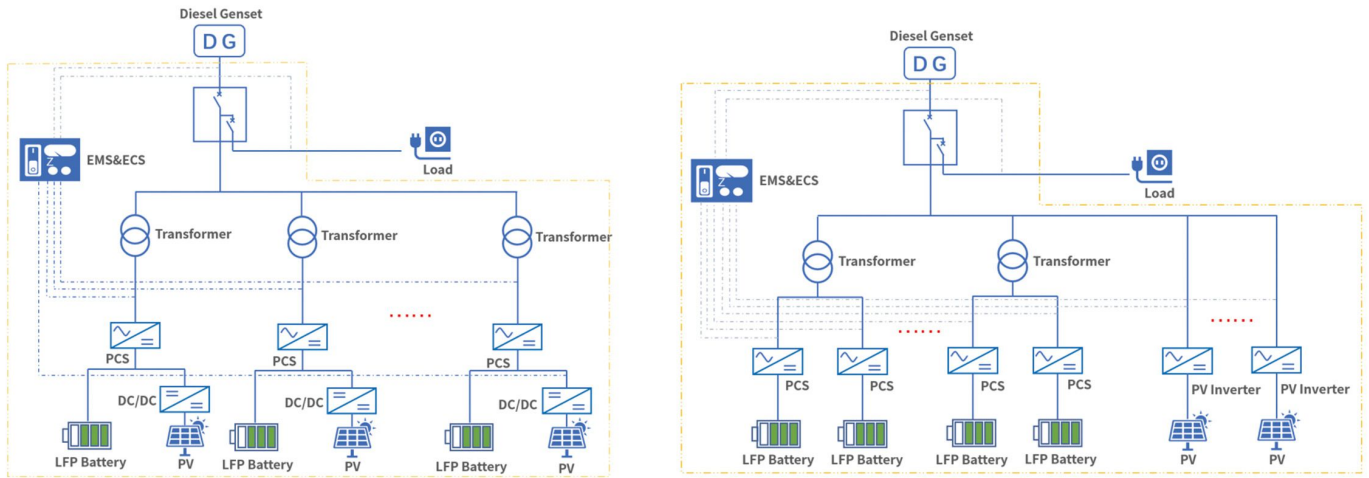
www.masspointenergy.com

sales@masspointenergy.com

Control architecture



Electrical topology



Features

- 1 ALL-In-One integration**
Battery System, PCS, PV inverter/converter, distribution box, EMS, fire suppression system, thermal control system all integrated.
- 2 Cloud system**
With cloud system, user can remotely monitor, control, and update software with OTA.
- 3 True-Turnkey**
All components 100% preinstalled, tested. Literally turn-key system.
- 4 Modular**
System Capacity can never be more flexible, it's also compatible with various Diesel Genset models.
- 5 10/20/40 feet standard size container**
Fulfilling with UN3536, can be shipped with battery. CE compatible, TUV certified.